



Aerial images from 1937 to 2002 show how development changed the area near this building, home to the Braddock District Supervisor's office and the Kings Park Library.

Each image focuses on same area of Kings Park, near Braddock, Rolling and Burke Lake roads. A red asterisk marks the building's location.



1937



In 1937, the building site is on the edge of an island of cultivated fields with a few buildings, surrounded by woods and narrow dirt roads.

1960



In 1960, little has changed. Two miles to the east the Beltway is under construction.



1966

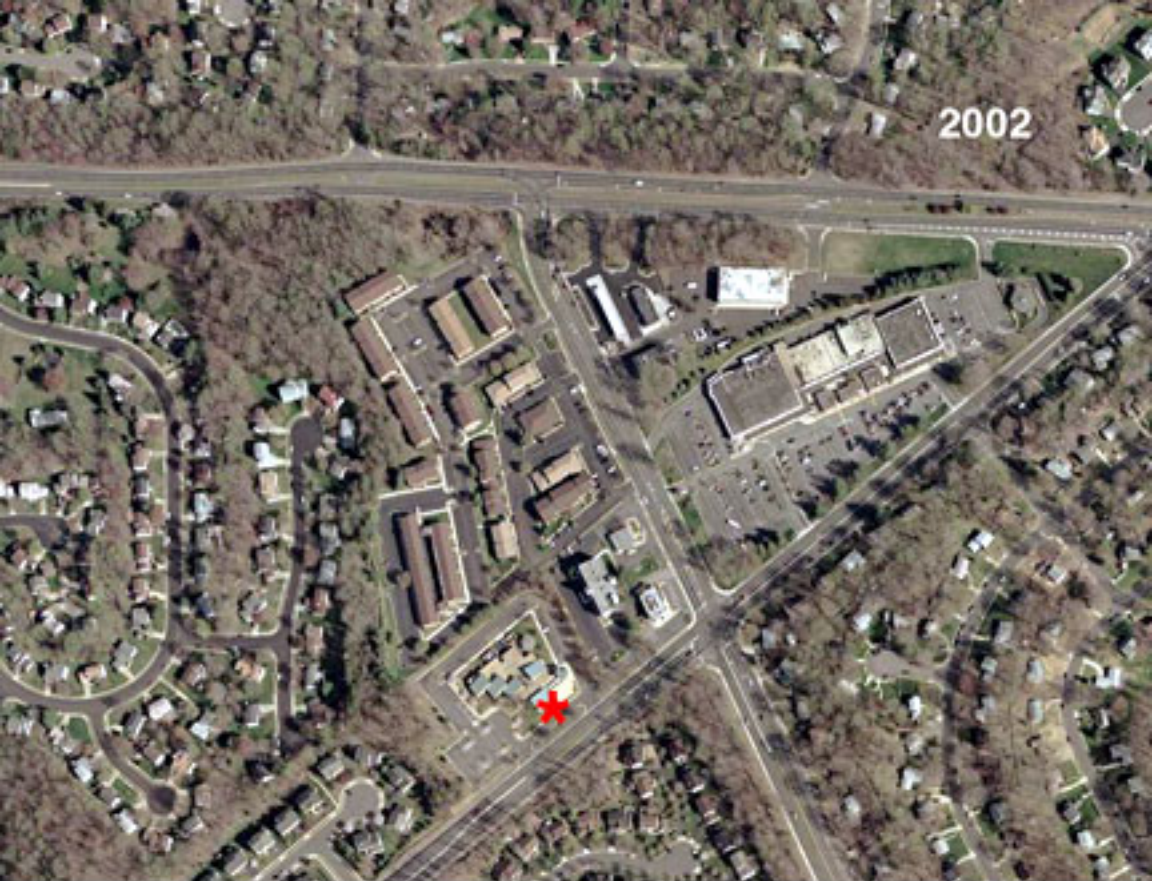


In 1966, much of Kings Park and Red Fox Forest (across Braddock Road) subdivisions are in place. Kings Park Shopping Center is under construction. The roads adjacent to the new development are now paved, but still two lanes.

1982



By 1982, development has passed on westward, but a few open spaces remain. The library building was completed in 1972.



2002

Finally, by 2002, in-fill development has filled in all open spaces and the multi-lane road network is complete. The library expanded in 1993, and the new wing for the Braddock District office was added in 2001.